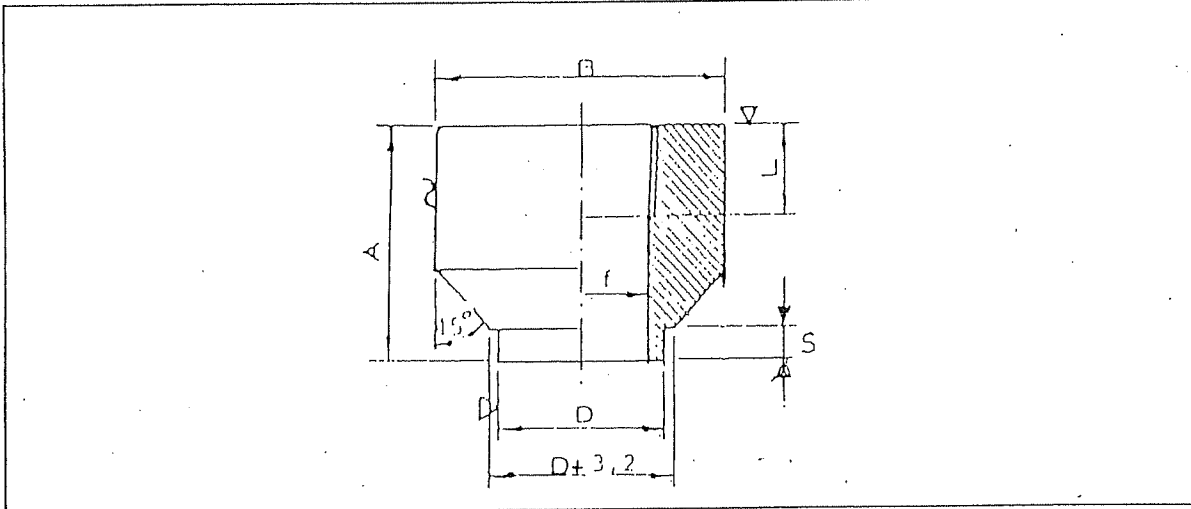


# Weld Couplets, 3000 Lbs Threaded to ANSI B2.1

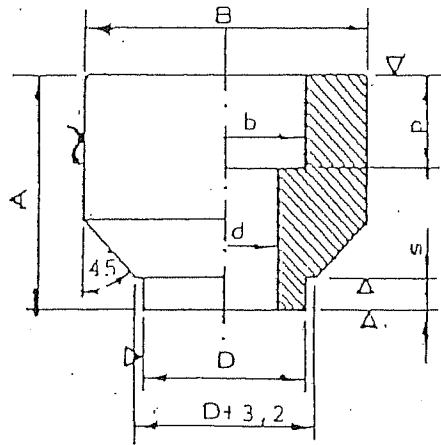


ND	A	B	D	s	f	L	Weight Kilos/Each
1/4"	30.0	25.5	14.0	5	10.5	10.2	0.900
3/8"	30.0	32.0	17.4	5	14.0	10.4	0.113
1/2"	33.5	41.0	21.6	5	17.5	13.6	0.141
3/4"	35.5	47.0	27.0	5	22.0	13.9	0.200
1"	43.0	57.0	33.7	5	28.0	17.3	0.425
1 1/4"	47.5	67.0	42.5	6	37.0	18.0	0.640
1 1/2"	51.0	76.0	48.6	7	43.0	18.4	0.850
2"	57.5	92.0	60.6	8	54.5	19.2	1.350

Dimensions in mm.  
 Sizes according to manufacturers standards.

# Weld Couplets, 3000 Lbs

# Socket Weld to ANSI B16.11



ND	A	B	D	s	P
1/4"	30.0	25.5	14.0	5	9.5
3/8"	30.0	32.0	17.4	5	11.1
1/2"	33.5	41.0	21.6	5	12.7
3/4"	35.5	47.0	27.0	5	14.2
1"	43.0	57.0	33.7	5	15.9
1 1/4"	47.5	67.0	42.5	6	17.5
1 1/2"	51.0	76.0	48.6	7	19.0
2"	57.5	92.0	60.6	8	22.2

ND	d		b		Weight Kilos/Each
	average	toler.	minlm.	toler.	
1/4"	9.24	± 0.38	14.10	+ 0.25 - 0	0.090
3/8"	12.52		17.53		0.113
1/2"	15.80		21.72		0.141
3/4"	20.93		27.05		0.200
1"	26.64		33.78		0.425
1 1/4"	35.05		42.55		0.690
1 1/2"	40.89		48.65		0.850
2"	52.50		61.11		1.350

Dimensions in mm