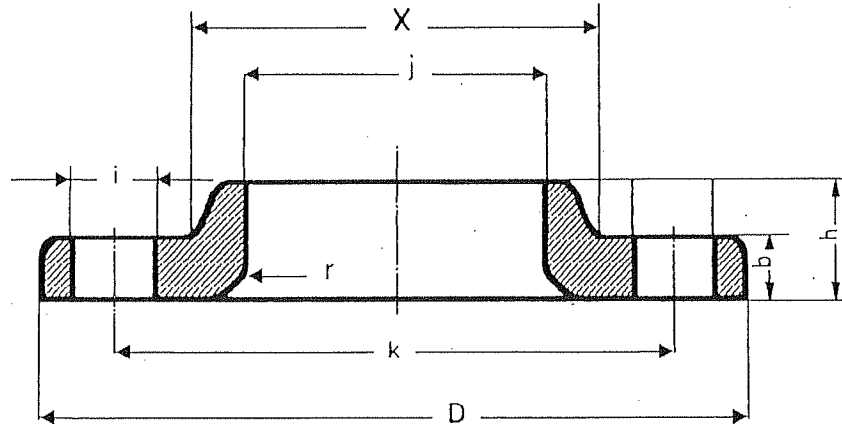


Lap Joint Flanges

ANSI B16.5

150 Lbs

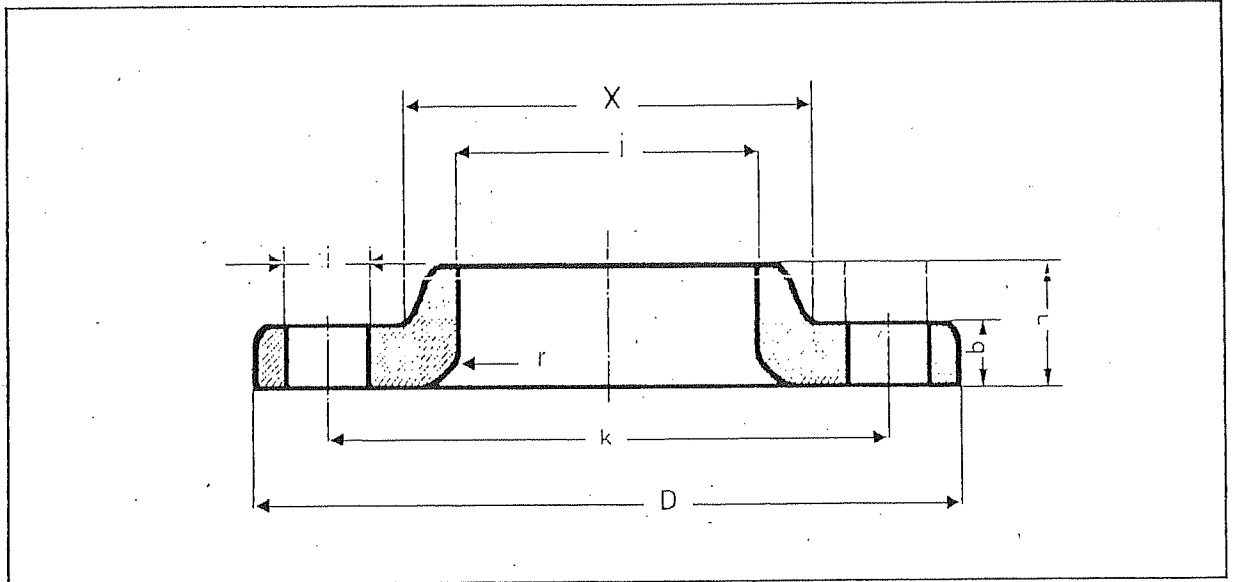


nominal pipe size	outside diam. of flange D	diam. of bore j	thickness of flange b	length thru hub h	radius r	diam. of hub X	drilling template			studbolts		approx. weight - kg
							diam. of bolt circle k	n° of holes	diam. of bolt holes i	diam.	length	
1/2"	88.9	22.9	11.1	15.9	3.2	30.2	60.3	4	15.9	1/2	2 1/2	0.8
3/4"	98.4	28.2	12.7	15.9	3.2	38.1	69.8	4	15.9	1/2	2 1/2	0.9
1"	107.9	35.1	14.3	17.5	3.2	49.2	79.4	4	15.9	1/2	2 3/4	1.0
1 1/4"	117.5	43.7	15.9	20.6	4.8	58.7	88.9	4	15.9	1/2	2 3/4	1.3
1 1/2"	127.0	50.0	17.5	22.2	6.4	65.1	98.4	4	15.9	1/2	3	1.4
2"	152.4	62.5	19.0	25.4	7.9	77.6	120.6	4	19.0	5/8	3 1/4	2.3
2 1/2"	177.8	75.4	22.2	28.6	7.9	90.5	139.7	4	19.0	5/8	3 1/2	3.2
3"	190.5	91.4	23.8	30.2	9.5	107.9	152.4	4	19.0	5/8	3 3/4	3.9
3 1/2"	215.9	104.1	23.8	31.7	9.5	122.2	177.8	8	19.0	5/8	3 3/4	5.0
4"	228.6	116.8	23.8	33.3	11.1	134.9	190.5	8	19.0	5/8	3 3/4	5.9
5"	254.0	144.5	23.8	36.5	11.1	163.5	215.9	8	22.2	3/4	4	6.8
6"	279.4	171.4	25.4	39.7	12.7	192.1	241.3	8	22.2	3/4	4	8.6
8"	342.9	222.2	28.6	44.4	12.7	246.1	298.4	8	22.2	3/4	4 1/4	13.6
10"	406.4	277.4	30.2	49.2	12.7	304.8	361.9	12	25.4	7/8	4 3/4	19.5
12"	482.6	328.2	31.7	55.6	12.7	365.1	431.8	12	25.4	7/8	4 3/4	29.0
14"	533.4	360.2	34.9	79.4	12.7	400.0	476.2	12	28.6	1	5 1/4	45.0
16"	596.9	411.2	36.5	87.3	12.7	457.2	539.7	16	28.6	1	5 1/2	58.0
18"	635.0	462.3	39.7	96.8	12.7	504.8	577.8	16	31.7	1 1/8	6	66.0
20"	698.5	514.3	42.9	103.2	12.7	558.8	635.0	20	31.7	1 1/8	6 1/4	84.0
24"	812.8	615.9	47.6	111.1	12.7	663.6	749.3	20	34.9	1 1/4	7	118.0

Lap Joint Flanges

ANSI B16.5

300 Lbs

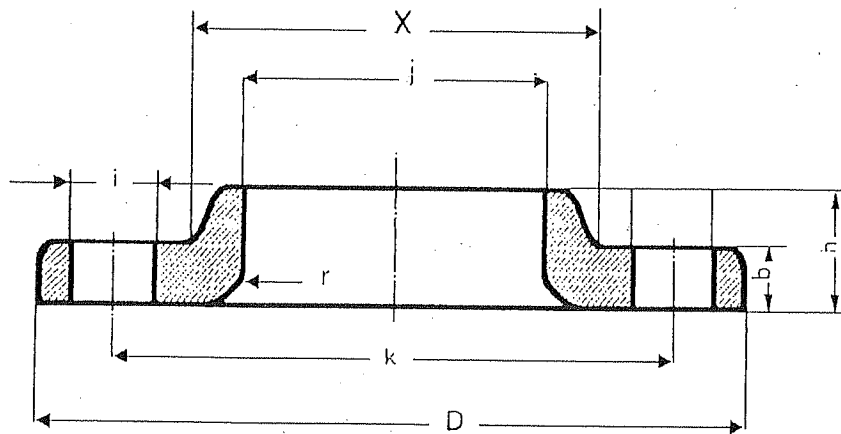


nominal pipe size	outside diam. of flange D	diam. of bore j	thickness of flange b	length thru hub h	radius r	diam. of hub X	drilling template			studbolts		approx. weight kg
							diam. of bolt circle k	n° of holes	diam. of bolt holes i	diam.	length	
1/2"	95.2	22.9	14.3	22.2	3.2	38.1	66.7	4	15.9	1/2	2 3/4	1.2
3/4"	117.5	28.2	15.9	25.4	3.2	47.6	82.5	4	19.0	5/8	3	1.3
1"	123.8	35.1	17.5	27.0	3.2	53.8	88.9	4	19.0	5/8	3 1/4	1.4
1 1/4"	133.3	43.7	19.0	27.0	4.8	63.5	98.4	4	19.0	5/8	3 1/4	1.8
1 1/2"	155.6	50.0	20.6	30.2	6.4	69.8	114.3	4	22.2	3/4	3 3/4	2.7
2"	165.1	62.5	22.2	33.3	7.9	84.1	127.0	8	19.0	5/8	3 1/2	3.2
2 1/2"	190.5	75.4	25.4	38.1	7.9	100.0	149.2	8	22.2	3/4	4	4.5
3"	209.5	91.4	28.6	42.9	9.5	117.5	168.3	8	22.2	3/4	4 1/4	5.9
3 1/2"	228.6	104.1	30.2	44.4	9.5	133.3	184.1	8	22.2	3/4	4 1/2	7.7
4"	254.0	116.8	31.7	47.6	11.1	146.0	200.0	8	22.2	3/4	4 1/2	10.0
5"	279.4	144.5	34.9	50.8	11.1	177.8	234.9	8	22.2	3/4	4 3/4	12.7
6"	317.5	171.4	36.5	52.4	12.7	206.4	269.9	12	22.2	3/4	5	17.7
8"	381.0	222.2	41.3	61.9	12.7	260.3	330.2	12	25.4	7/8	5 1/2	26.3
10"	444.5	277.4	47.6	95.2	12.7	320.7	387.3	16	28.6	1	6 1/4	41.0
12"	520.7	328.2	50.8	101.6	12.7	374.6	450.8	16	31.7	1 1/8	6 3/4	63.0
14"	584.2	360.2	54.0	111.1	12.7	426.4	514.3	20	31.7	1 1/8	7	86.0
16"	647.7	411.2	57.1	120.6	12.7	482.6	571.5	20	34.9	1 1/4	7 1/2	109.0
18"	711.2	462.3	60.3	130.2	12.7	533.4	628.6	24	34.9	1 1/4	7 3/4	138.0
20"	774.7	514.3	63.5	139.7	12.7	587.4	685.8	24	34.9	1 1/4	8 1/4	170.0
24"	914.4	615.9	69.8	152.4	12.7	701.7	812.8	24	41.3	1 1/2	9 1/4	241.0

Lap Joint Flanges

ANSI B16.5

600 Lbs

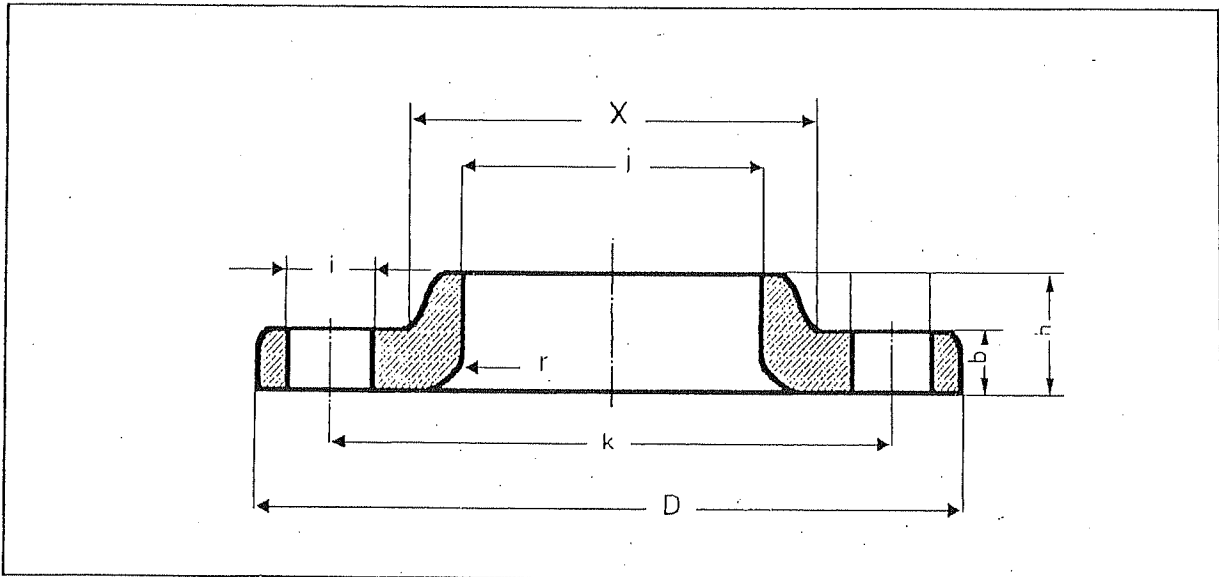


nominal pipe size	outside diam. of flange D	diam. of bore j	thickness of flange b	length thru hub h	radius r	diam. of hub X	drilling template			studbolts		approx. weight kg
							diam. of bolt circle k	n° of holes	diam. of bolt holes i	diam.	length	
1/2"	95.2	22.9	14.3	22.2	3.2	38.1	66.7	4	15.9	1/2	3 1/4	1.3
3/4"	117.5	28.2	15.9	25.4	3.2	47.6	82.5	4	19.0	5/8	3 1/2	1.4
1"	123.8	35.1	17.5	27.0	3.2	54.0	88.9	4	19.0	5/8	3 3/4	1.8
1 1/4"	133.3	43.7	20.6	28.6	4.8	63.9	98.4	4	19.0	5/8	4	2.7
1 1/2"	155.6	50.0	22.2	31.7	6.4	69.8	114.3	4	22.2	3/4	4 1/4	3.2
2"	165.1	62.5	25.4	36.5	7.9	84.1	127.0	8	19.0	5/8	4 1/4	4.1
2 1/2"	190.5	75.4	28.6	41.3	7.9	100.0	149.2	8	22.2	3/4	4 3/4	5.4
3"	209.5	91.4	31.7	46.0	9.5	117.5	168.3	8	22.2	3/4	5	6.8
3 1/2"	228.6	104.1	34.9	49.2	9.5	133.3	184.1	8	25.4	7/8	5 1/2	9.1
4"	273.0	116.8	38.1	54.0	11.1	152.4	215.9	8	25.4	7/8	5 3/4	16.3
5"	330.2	144.5	44.4	60.3	11.1	188.9	266.7	8	28.6	1	6 1/2	27.7
6"	355.6	171.4	47.6	66.7	12.7	222.2	292.1	12	28.6	1	6 3/4	35.0
8"	419.1	222.2	55.6	76.2	12.7	273.0	349.2	12	31.7	1 1/8	7 3/4	51.0
10"	508.0	277.4	63.5	111.1	12.7	342.9	431.8	16	34.9	1 1/4	8 1/2	89.0
12"	558.8	328.2	66.7	117.5	12.7	400.0	488.9	20	34.9	1 1/4	8 3/4	109.0
14"	603.2	360.2	69.8	127.0	12.7	431.8	527.0	20	38.1	1 3/8	9 1/4	132.0
16"	685.8	411.2	76.2	139.7	12.7	495.2	603.2	20	41.3	1 1/2	10	182.0
18"	742.9	462.3	82.5	152.4	12.7	546.1	654.0	20	44.4	1 5/8	10 3/4	213.0
20"	812.8	514.3	88.9	165.1	12.7	669.6	723.9	24	44.4	1 5/8	11 1/2	274.0
24"	939.8	615.9	101.6	184.1	12.7	717.5	838.2	24	50.8	1 7/8	13	393.0

Lap Joint Flanges

ANSI B16.5

1500 Lbs



nominal pipe size	outside diam. of flange D	diam. of bore j	thickness of flange b	length thru hub h	radius r	diam. of hub X	drilling template			studbolts		approx. weight kg
							diam. of bolt circle k	n° of holes	diam. of bolt holes i	diam.	length	
1/2"	120.6	22.9	22.2	31.7	3.2	38.1	82.5	4	22.2	3/4	4 1/4	3.2
3/4"	130.2	28.2	25.4	34.9	3.2	44.4	88.9	4	22.2	3/4	4 1/2	3.6
1"	149.2	35.1	28.6	41.3	3.2	52.4	101.6	4	25.4	7/8	5	4.1
1 1/4"	158.7	43.7	28.6	41.3	4.8	63.5	111.1	4	25.4	7/8	5	4.5
1 1/2"	177.8	50.0	31.7	44.4	6.4	69.8	123.8	4	28.6	1	5 1/2	6.4
2"	215.9	62.5	38.1	57.1	7.9	104.8	165.1	8	25.4	7/8	5 3/4	11.3
2 1/2"	244.5	75.4	41.3	63.5	7.9	123.8	190.5	8	28.6	1	6 1/4	15.9
3"	266.7	91.4	47.6	73.0	9.5	133.3	203.2	8	31.7	1 1/8	7	21.3
4"	311.1	116.8	54.0	90.5	11.1	161.9	241.3	8	34.9	1 1/4	7 3/4	34
5"	374.6	144.5	73.0	104.8	11.1	196.8	292.1	8	41.3	1 1/2	9 3/4	63
6"	393.7	171.4	82.5	119.1	12.7	228.6	317.5	12	38.1	1 3/8	10 1/4	77
8"	482.6	222.2	92.1	142.9	12.7	292.1	393.7	12	44.4	1 5/8	11 1/2	130
10"	584.2	277.4	107.9	177.8	12.7	368.3	482.6	12	50.8	1 7/8	13 1/4	220
12"	673.1	328.2	123.8	219.1	12.7	450.8	571.5	16	54.0	2	14 3/4	340
14"	749.3	360.2	133.3	241.3	12.7	495.3	635.0	16	60.3	2 1/4	16	-
16"	825.5	411.2	146.0	260.3	12.7	552.4	704.8	16	66.7	2 1/2	17 1/2	-
18"	914.4	462.3	161.9	276.2	12.7	596.9	774.7	16	73.0	2 3/4	19 1/2	-
20"	984.2	514.3	177.8	292.1	12.7	641.3	831.8	16	79.4	3	21 1/2	-
24"	1168.4	615.9	203.2	330.2	12.7	762.0	990.6	16	92.1	3 1/2	24 1/2	-