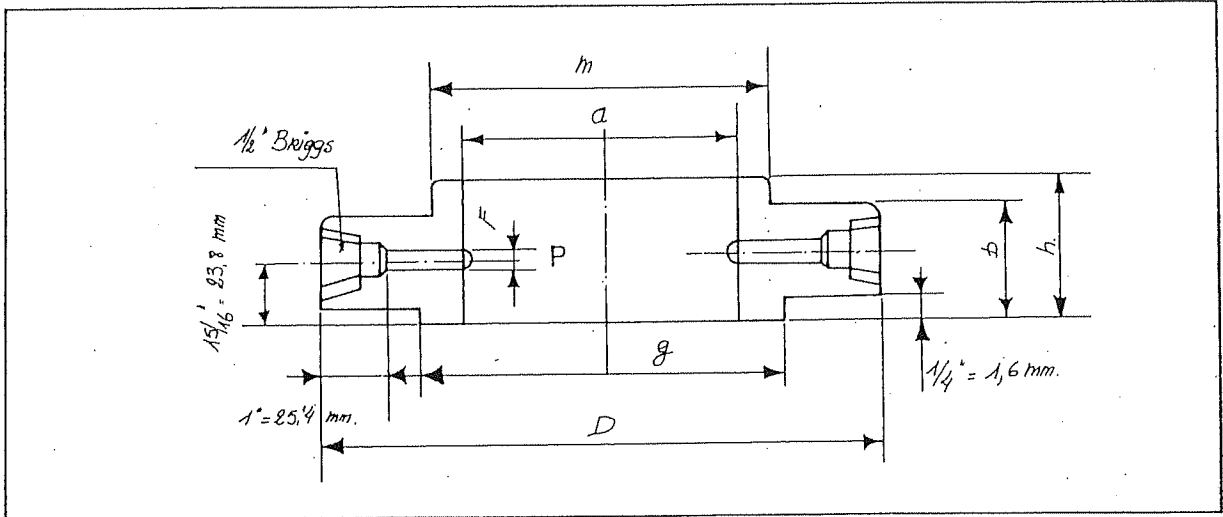


Orifice Slip-on Flanges

ANSI B16.36 and 36a

300 Lbs



nominal pipe size	bore a mm	outside diam. of flange D	thickness of flange min. b	length thru hub h	diam. of raised face g	drilling template			diam. of bore P	diam. m	approx. weight kilo
						diam. of bolt circle	n° of holes	diam. of bolt holes			
1"	34.90	123.8	38.1	47.6	50.8	88.9	4	17.5	6.35	54.0	6.8
1 1/4"	43.66	133.35	38.1	46.0	63.5	98.4	4	17.5	6.35	63.5	7.7
1 1/2"	50.06	155.6	38.1	47.6	73.0	114.3	4	20.6	6.35	61.8	11.0
2"	61.91	165.1	38.1	49.2	92.1	127.0	8	17.5	6.35	84.1	12.2
2 1/2"	74.61	190.5	38.1	50.8	104.8	149.2	8	20.6	6.35	100.0	16.3
3"	90.50	209.55	38.1	52.4	127.0	168.3	8	20.6	9.5	117.5	19.0
4"	115.9	254.0	38.1	54.0	157.2	200.0	8	20.6	12.7	146.05	27.0
5"	143.8	279.4	38.1	54.0	185.7	234.95	8	22.2	12.7	117.8	31.0
6"	170.7	317.5	38.1	54.0	215.9	269.9	12	22.2	12.7	206.4	43.0
8"	221.5	381.0	41.3	61.9	269.9	330.2	12	25.4	12.7	260.35	61.0
10"	276.35	444.5	47.6	66.7	323.8	387.3	16	28.6	12.7	320.7	91.0
12"	327.15	520.7	50.8	73.0	381.0	450.8	16	31.7	12.7	374.6	127.0

* in conformity with AMERICAN GAS ASSOCIATION RECOMMENDATIONS